

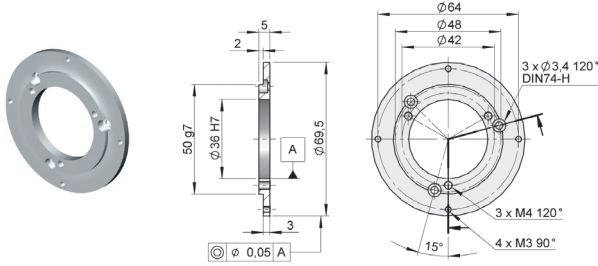
# FLANŞLAR

## STANDART FLANŞLAR

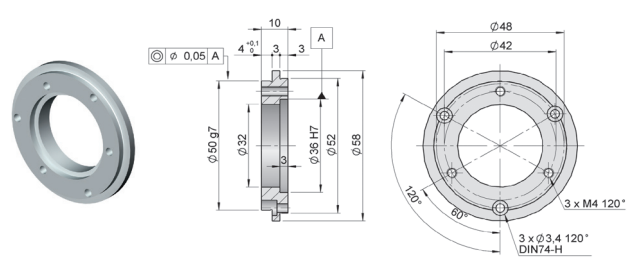


Kod	Uygun seri	Uygun sabitleme vidaları
90.1002	10, 20, 11, CM10, CS10	3 M3 x 6 DIN84, DIN85, DIN7985, DIN7984
90.1003	10, 20, CM10, CS10	3 M3 x 8 DIN84, DIN85, DIN7985, DIN7984
90.1004	10, 20, CM10, CS10	3 M3 x 6 DIN84, DIN85, DIN7985, DIN7984
90.1005	10, 20, 11, CM10, CS10	3 M3 x 10 DIN963, DIN965
90.1006	10, 20, CM10, CS10	3 M3 x 10 DIN912
90.1008	30, CS30	3 M6 x 10 DIN7991
90.1015	10	3 M3 x 10 DIN963, DIN965
90.1057	21, 36	3 M3 x 6 DIN963, DIN965
90.1102	PR90	3 M3 x 8 DIN7991
90.1103	58	1 M4 x 10 DIN912
90.1105	58, 20	3 M3 x 10 DIN912

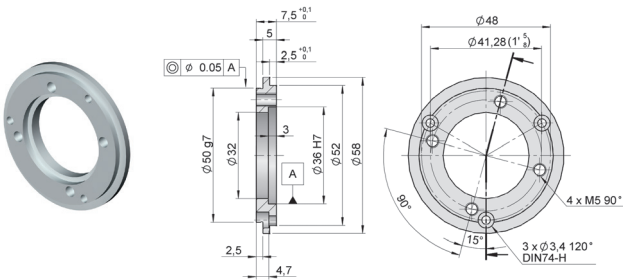
### 90.1002



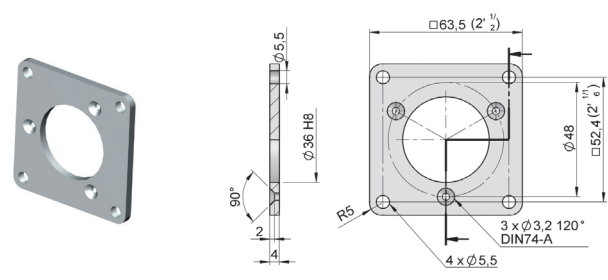
### 90.1003



### 90.1004



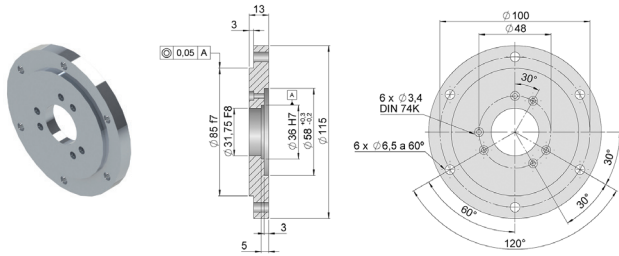
### 90.1005



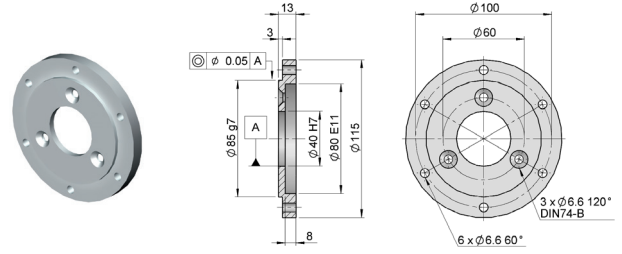
# FLANŞLAR

## STANDART FLANŞLAR

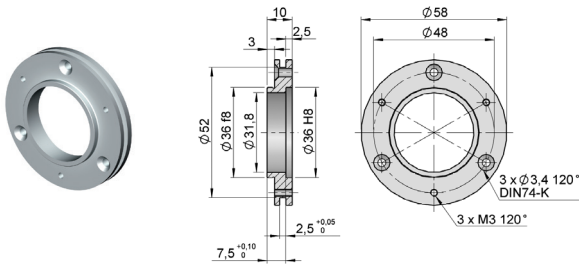
90.1006



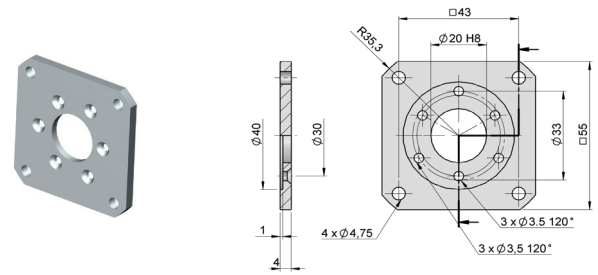
90.1008



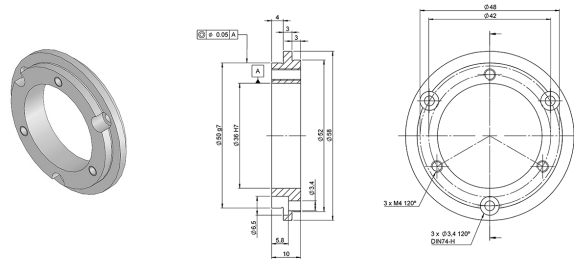
90.1015



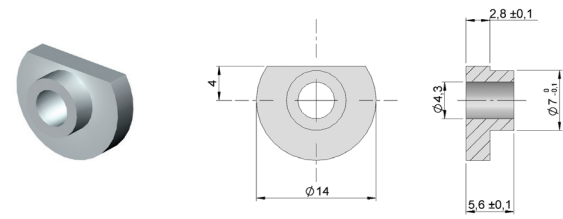
90.1057



90.1102



90.1103



90.1105

