

# MESSRÄDER



## TECHNISCHE EIGENSCHAFTEN

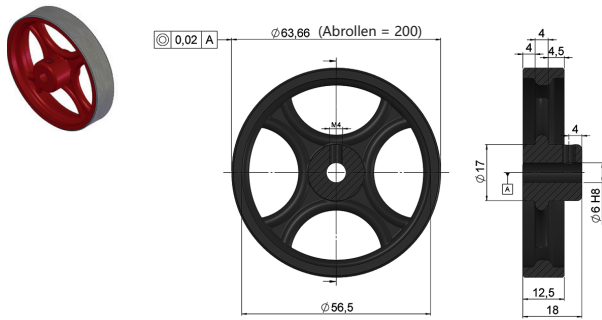
Typ	Abrollen mm	Durchmesser Ø D mm	Welle (*) Ø d mm	Breite B mm	M (DIN 916)	
90.9101	Aluminium gerändelt kreuzrändel	200	63.66	6	12	M4 x 6
90.9102	Aluminium gerändelt kreuzrändel	305	97.08	10	12	M5 x 6
90.9103	Aluminium gerändelt kreuzrändel	500	159.15	10	25	M5 x 6
90.9107	Polyurethan glatt	500	159.15	10	25	M5
90.9108	Polyurethan glatt	200	63.66	6	12	M4 x 6
90.9110	Aluminium gerändelt kreuzrändel	200	63.66	6	12	M4 x 6
90.9111	Gummi	200	63.66	6	12	M4 x 6
90.9112	Polyurethan genoppt	200	63.66	6	12	M4 x 6
90.9113	Gummi	500	159.15	10	25	M5 x 6
90.9114	Polyurethan geriffelt	500	159.15	10	25	M5
90.9115	Polyurethan geriffelt	200	63.66	6	12	M4 x 6
90.9117	Polyurethan glatt	300	95.49	10	12	M5 x 6
90.9119	Gummi	200	63.66	6	20	M4 x 5
90.9122	Polyurethan glatt	305	97.08	10	12	M5 x 6
90.9123	Polyurethan genoppt	305	97.08	10	12	M5 x 6
90.9124	Polyurethan geriffelt	305	97.08	10	12	M5 x 6
90.9150	Polyurethan genoppt	500	159.15	10	25	M5
90.9175	Aluminium gerändelt kreuzrändel	500	159.15	10	25	M5

(\*) Auf Anfrage auch andere Wellendurchmesser möglich. Bestellbeispiel meßrad 90.9113 mit welle 6 mm: 90.9113.6

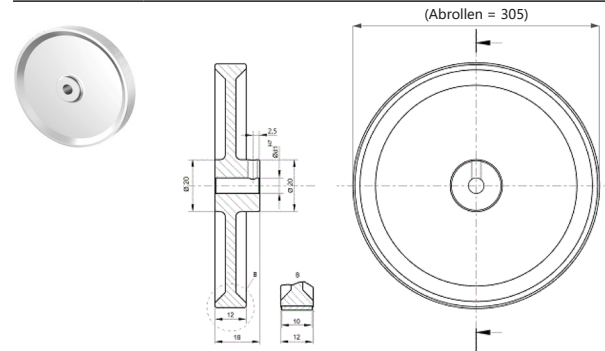


# MESSRÄDER

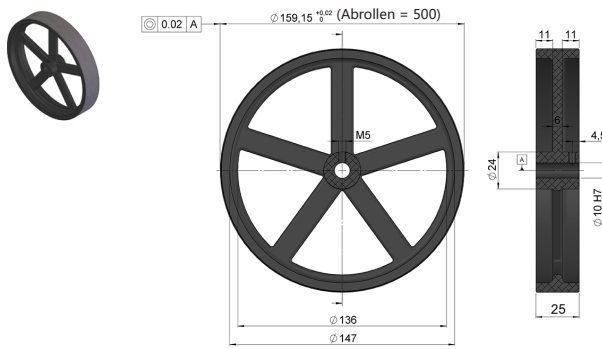
90.9101



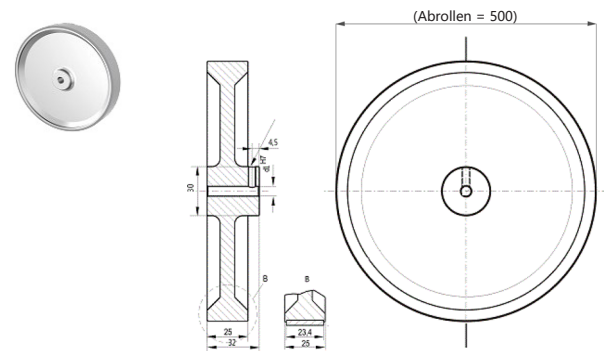
90.9102



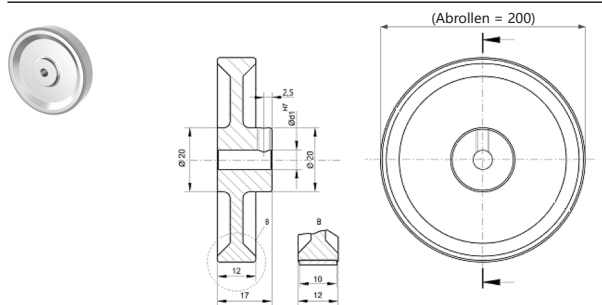
90.9103



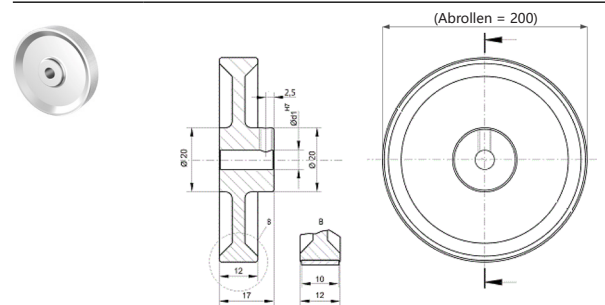
90.9107



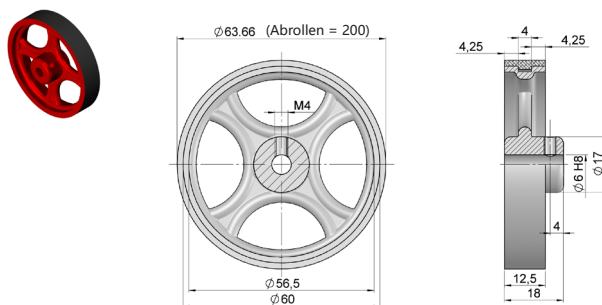
90.9108



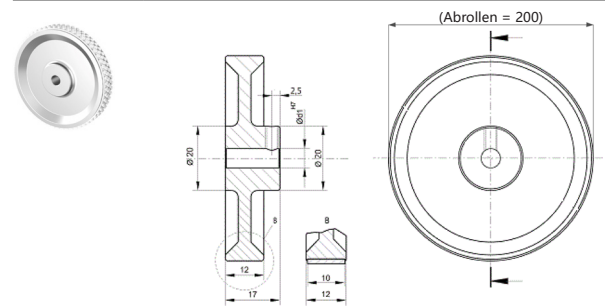
90.9110



90.9111

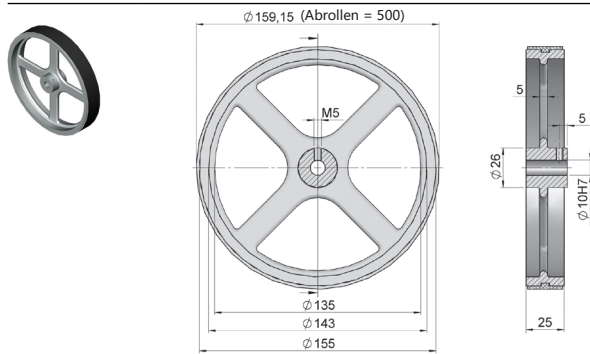


90.9112

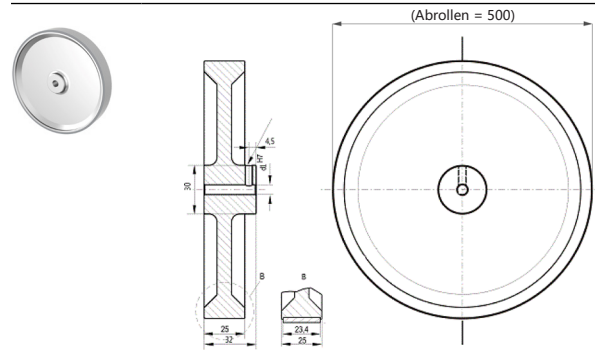


# MESSRÄDER

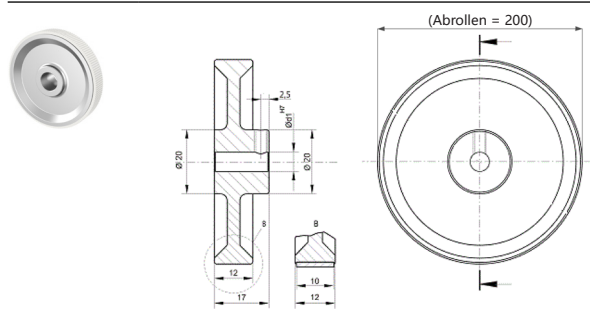
90.9113



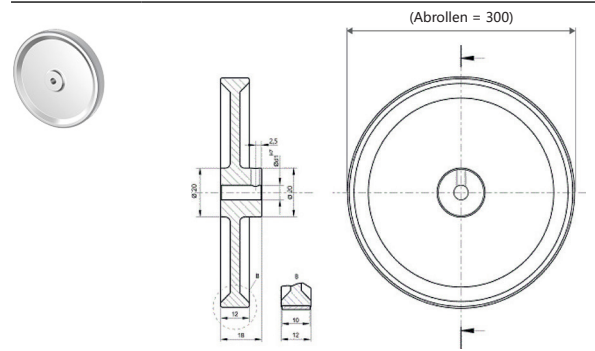
90.9114



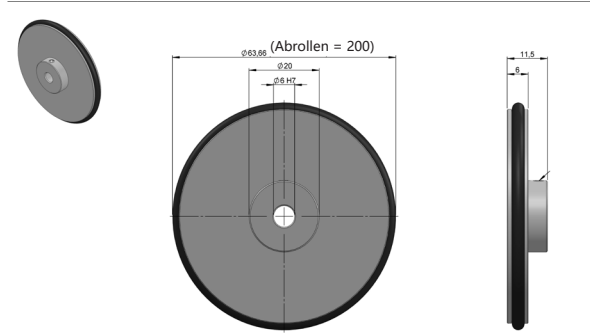
90.9115



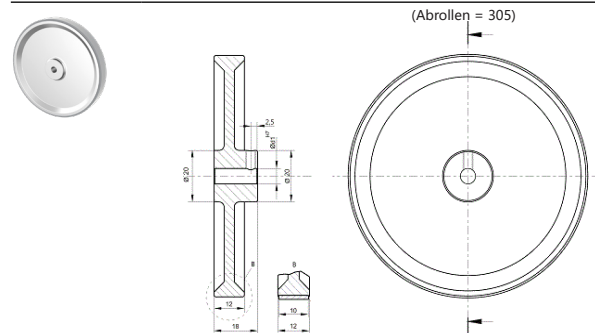
90.9117



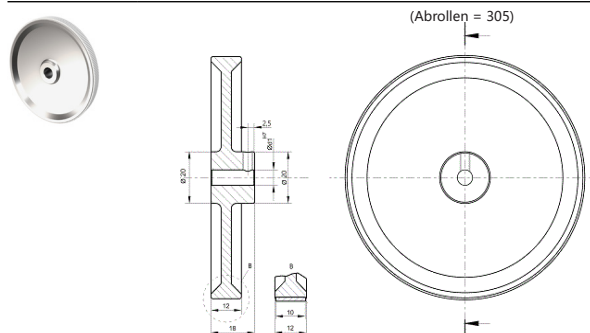
90.9119



90.9122



90.9123



90.9124

