

# POLY-FLEX

## ACETAL GROOVED FLEXIBLE COUPLINGS

- Absorption of significant angular and radial deviations
- Low inertia
- Free of speed variations in the transmission
- Torsional vibration attenuation
- Electric and thermal insulation between the shafts
- Mechanical protection against excessive torque



POLY-FLEX are flexible couplings manufactured in polyamide and reinforced with fibreglass. Reduced size for applications that do not require high torque and where there is significant shaft misalignment.

The material provides excellent resistance to fatigue, which makes it very suitable for high-speed couplings. It absorbs torsional vibration and insulates the shafts both electrically and thermally, acting, where necessary, as a mechanical fuse.

The tightening of the setscrews has been reinforced by incorporating an aluminium fitting.

These couplings are suitable for measurement systems and machines that do not offer high resistant torque values. They are recommended for tachometric generators potentiometers and encoders, etc. POLY-FLEX couplings can be used in the temperature range of -30° to 85°.

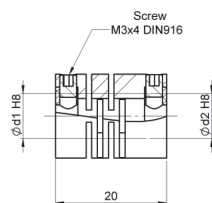
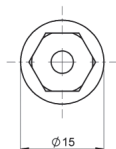
### TECHNICAL SPECIFICATIONS

	Torque <i>Ncm</i>	Clamping torque <i>Ncm</i>	Max. Speed <i>rpm</i>	Admissible max. misalignment			Torsion spring stiffness <i>Nm/rad</i>	Radial spring stiffness <i>N/mm</i>	Weight <i>gr</i>	Inertia <i>gcm<sup>2</sup></i>
				Angular <i>degree</i>	Axial <i>mm</i>	Radial <i>mm</i>				
<b>PFP 1520</b>	30	70	12000	±2,5	±0,2	±0,3	12	45	6	2
<b>PFP 2224</b>	80	120	10000	±3	±0,2	±0,3	38	115	10	7

#### PFP 1520

Ordering code example: PFP 1520 06/06

Ø d1/d2

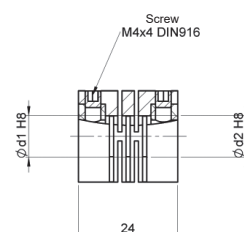
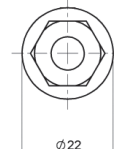


03/03  
03/05  
03/06  
**04/04**  
04/05  
04/06  
05/05  
05/06  
**06/06**  
6.35/6.35

#### PFP 2224

Ordering code example: PFP 2224 08/08

Ø d1/d2



04/04  
06/06  
06/6.35  
06/08  
06/10  
6.35/6.35  
**08/08**  
08/10  
**10/10**  
9.52/9.52

Printed in bold = Immediate delivery. Check with us the delivery time for the other options.

Other shaft diameter available, upon request.

