

UNION

RIGID COUPLING

- High rigidity
- Free of cinematic errors in transmission
- Very little misalignment absorption
- Easy assembly, disassembly and adjustment



The UNION couplings are simple rigid couplings of two tooled stainless steel pieces.
They are apt for transmissions that require elevated torques and where there are no misalignments between the shafts.

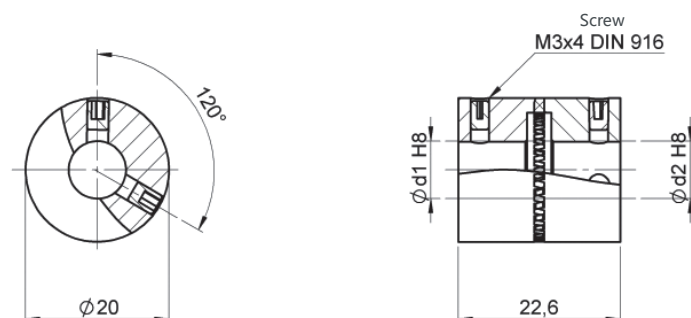
In the case of these couplings, the angular misalignments may lead to small errors. They are suitable for positioning shaft slow drives.

TECHNICAL SPECIFICATIONS

Torque	Clamping torque	Max. Speed	Admissible max. misalignment			Module	Radial spring stiffness	Weight	Inertia	Temperature range
			Angular	Axial	Radial					
Ncm	Ncm	rpm	degree	mm	mm	mm	N/mm	gr	gcm ²	°C
200	80	8000	±0.5	-	-	0.7	-	42	26	-30 to +200

UFP 2022 - Stainless steel

Ordering code example: UFP 2022 06/06



d1/d2	06	08	10
06	X	X	X
08		X	X
10			X

