

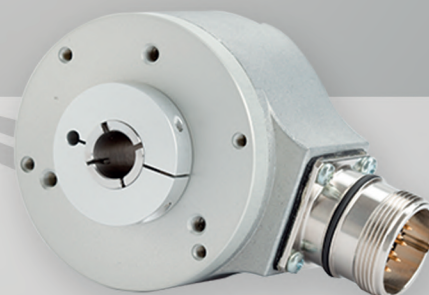


**THE ALL-IN-ONE  
INCREMENTAL  
ENCODER**

[www.encoderhohner.com](http://www.encoderhohner.com)



SERIE **PR90**

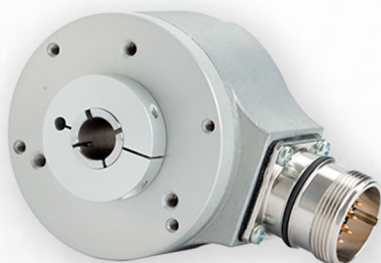


SERIE **PR90H**

# PROGRAMMABLE INCREMENTAL ENCODER



SERIE **PR90**



SERIE **PR90H**



## PROGRAMMABLE FROM 1 TO 65.536 PPR

Any number of pulses per rotation available, from 1 to 65.536 PPR.



## DIRECT USB CABLE CONNECTION

Programmable via USB, without an additional programming box.



## MULTI-VOLTAGE 5..30V

Automatic power supply voltage detection (5...30V). HTL / TTL selectable output.



## PROGRAMMING WITH OR WITHOUT POWER

No need for the encoder to be powered up, just connected to the programming PC.



## STATUS INDICATOR

Connection indicator and error self-detection.



## FROM 0° TO 360°

Reference signal position from 0° to 360°.



## CONFIGURABLE OPTIONS

- Pulses per Revolution (PPR)
- Output type (HTL / TTL)
- Rotation direction (CW / CCW)
- Reference signal position (Z from 0° to 360°)
- Reference signal width (Z 90° / 180°)
- Differential output inversion (A ↔ A- / B ↔ B- / Z ↔ Z-)



## PROGRAMMING



- 1 Connect the encoder to a USB port
- 2 Programming software installation
- 3 Run the software and program

[www.encoderhohner.com/PR90](http://www.encoderhohner.com/PR90)