

Image with anti-rotation system through torque arm

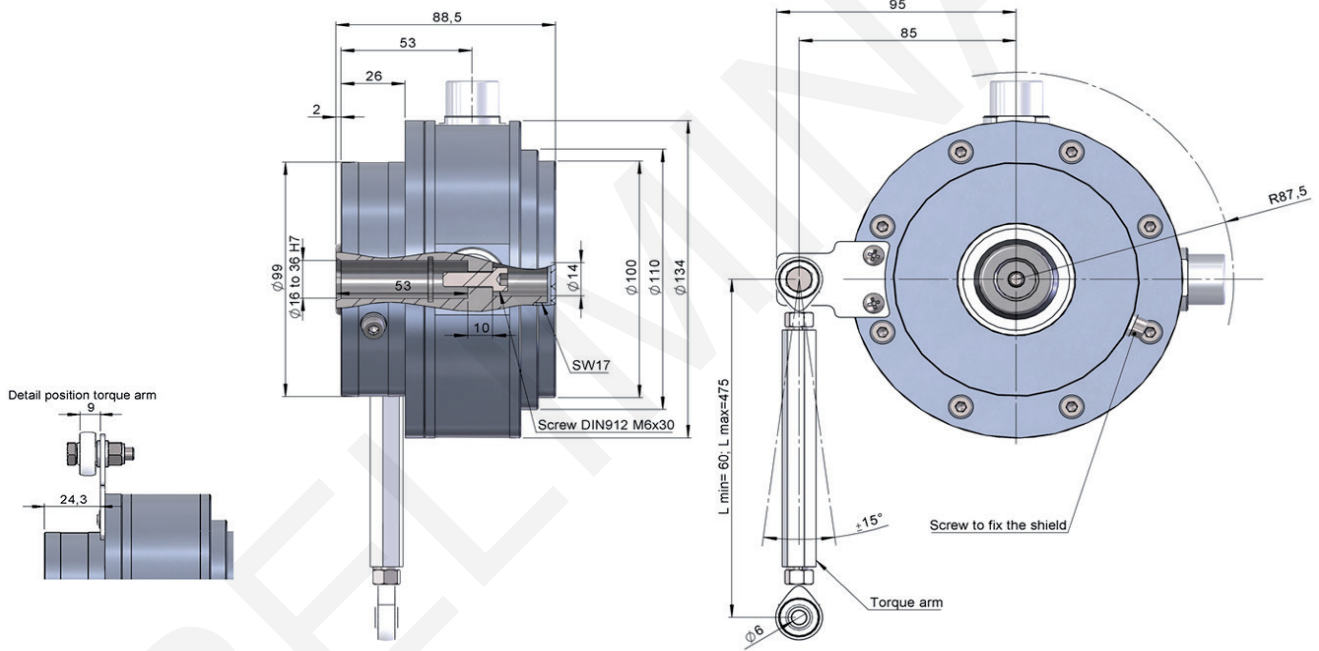


SERIE 130M

MAGNETIC INCREMENTAL ENCODER FOR HEAVY DUTY INDUSTRIAL APPLICATIONS

- Resolution up to 2.048 pulses per turn
- External diameter 134 mm
- Hollow shaft from \varnothing 16 to 36 mm
- Protection class IP68 according to DIN EN 60529
- Oil-immersion operation up to 90°C / 10 bar
- HTL and TTL output signals available
- Redundant magnetic sensing
- Solid aluminium housing for high vibration and shock resistance

Magnetic Encoder	Incremental Encoder	Subsea Encoder	High shaft load capacity	Vibration and shock resistant	IP68	Express Delivery



Drawing hollow shaft type 16, with anti-rotation system through torque arm, connection type 1

REFERENCE								Reference example: 130M-116212-1024
Serie	Anti-rotation system	Hollow shaft	Output signals	Connection	Power Supply / Electronic output	Pulses number	Special customer	
130M -	<input type="checkbox"/>	<input type="checkbox"/>	<input type="checkbox"/>	<input type="checkbox"/>	<input type="checkbox"/> -	<input type="checkbox"/> <input type="checkbox"/> <input type="checkbox"/> <input type="checkbox"/>	<input type="checkbox"/> <input type="checkbox"/> <input type="checkbox"/> <input type="checkbox"/>	

- | | | | | | |
|---------------|------------------------------|--|---------------------------------------|-------------------------------|-----|
| 0. None | 16. \varnothing 16 mm (**) | 1. A \tilde{A} +B \tilde{B} +0 \tilde{O} | 1. Connector 8p IP68 Hermetic sealing | 1. 9...30 VDC / HTL | (*) |
| 1. Torque arm | | 2. Redundant A \tilde{A} +B \tilde{B} +0 \tilde{O} | | 2. 5 VDC \pm 5% / TTL RS422 | |

Order your reference
Step file 3D

info@encoderhohner.com
service available in 24 h

(*) 128, 256, 512, 1024, 2048

(**) Special rugged aluminium housing with through-hole hollow shaft from \varnothing 16 to 36 mm.



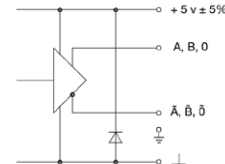
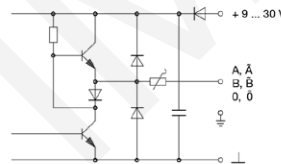
SERIE 130M

MAGNETIC INCREMENTAL ENCODER FOR HEAVY DUTY INDUSTRIAL APPLICATIONS

MECHANICAL SPECIFICATIONS

Materials	Housing: Anodized aluminium 20 µm Shaft: Stainless Steel AISI316
Housing fixing	Torque arm
Shaft fixing	Screw M6x30
Hollow shaft diameter	16 to 36 mm
Maximum number of revolutions permitted mechanically	2800 rpm
Protection against dust and splashes according to DIN EN 60529	IP68
Rotor inertia moment	4,7 Kgcm ²
Starting torque at 20°C (68°F)	≈ 0,15 Nm
Maximum load permitted on axial shaft	150 N
Maximum load permitted on radial shaft	200 N
Weight	≈ 2,4 Kg
Operating temperature range	-20°C to +90°C
Vibration according to DIN EN 60068-2-6	150 m/s ² (15g) (10Hz...2000Hz)
Shock according to DIN EN 60068-2-27	2000 m/s ² (12ms)
Maximum pulses per turn	128, 256, 512, 1024, 2048
Connection	Industrial connectors 8p (Female contacts) IP68; Hermetic sealing Male connector not included

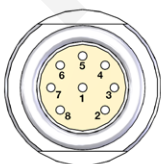
OUTPUT SIGNALS



OUTPUT CIRCUIT	HTL	TTL RS422
Reference code	1	2
Power supply	9...30 VDC	5 VDC ± 5%
Consumption (without load)	≤ 90 mA (each system)	≤ 90 mA (each system)
Frequency	100 kHz	100 kHz
Channel A leads (90° electric) channel B, view from the shaft, shaft rotating clockwise		

The encoder complies with the Electromagnetic Compatibility standards (EMC) of emission in residential, commercial and light industry environments (UNE-EN 61000-6-3:2007 + A1: 2012) and immunity in industrial environments (UNE-EN 61000-6-2:2006 + ERR:2009).

CONNECTION



Industrial Connector 8p (Female contacts)
IP68 | Hermetic sealing

1	2	3	4	5	6	7	8
VCC	GND	B	0	~A	~B	A	~0

Male connector 95.0007370 not included in the reference (order separately). All systems available in the sections "ACCESSORIES".