



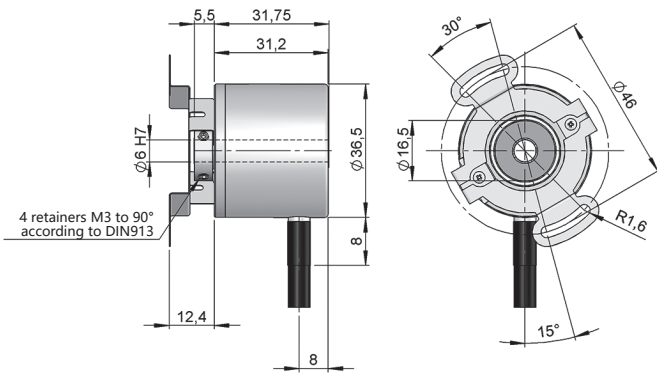
SERIE 22H

MINIATURE HOLLOW SHAFT INCREMENTAL ENCODER FOR INDUSTRIAL APPLICATIONS

- Resolution up to 10000 pulses per turn
- External diameter 36.5 mm
- Hollow shaft \varnothing 6 or 8 mm
- Protection class IP50 according to DIN EN 60529
- Shaft fixing through setscrew
- Anti-rotation system through flexible flange or pin torque support
- Connection by cable (other cable length available) or industrial connector M12

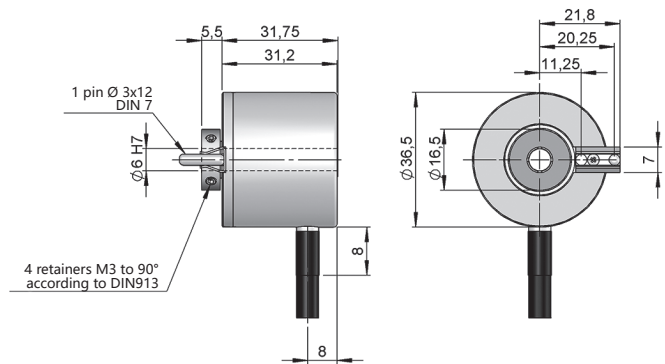


Flexible flange (90.1037)



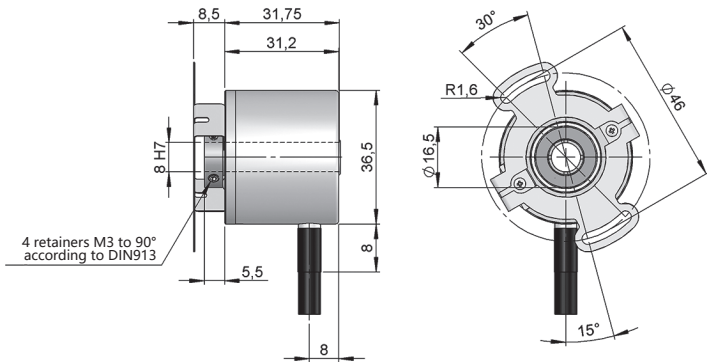
Drawing connection type 2, hollow shaft type 1, anti-rotation system type 1

Anti-rotation pin (93.0108205)



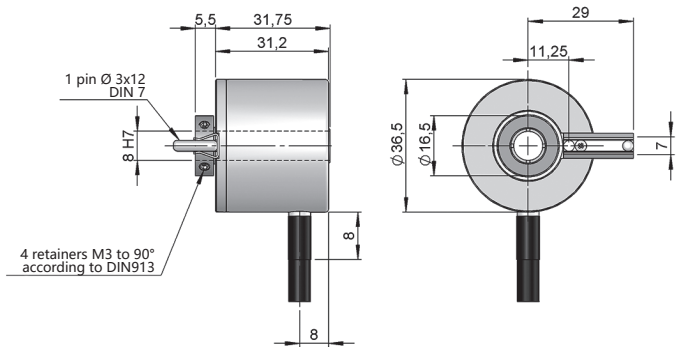
Drawing connection type 2, hollow shaft type 1, anti-rotation system type 2

Flexible flange (90.1111)



Drawing connection type 2, hollow shaft type 2, anti-rotation system type 3

Anti-rotation pin (93.0108208)



Drawing connection type 2, hollow shaft type 2, anti-rotation system type 4



SERIE 22H

MINIATURE HOLLOW SHAFT INCREMENTAL ENCODER FOR INDUSTRIAL APPLICATIONS

REFERENCE							Reference example: 22H-11721-500
Serie	Anti-rotation system	Hollow shaft	Output signals	Connection	Power Supply / Electronic output	Pulses number	Special customer
22H -	<input type="checkbox"/>	<input type="checkbox"/>	<input type="checkbox"/>	<input type="checkbox"/>	<input type="checkbox"/> -	<input type="checkbox"/> <input type="checkbox"/> <input type="checkbox"/> <input type="checkbox"/> <input type="checkbox"/> <input type="checkbox"/>	<input type="checkbox"/> <input type="checkbox"/> <input type="checkbox"/> <input type="checkbox"/>
	1. Flexible flange (90.1037) 2. Anti-rotation pin (93.0108205) 3. Flexible flange (90.1111) 4. Anti-rotation pin (93.0108208)	1. Ø 6 mm 2. Ø 8 mm	2. AB 3. ABZ 7. ABZ, \overline{ABZ} 8. AB, \overline{AB}	2. Radial cable 3. Radial M12 8p CCW	0. 11...30 VDC / NPN Open collector 11...30 VDC 1. 11...30 VDC / Line driver differential Push-Pull 11...30 VDC 2. 5 VDC / RS422 5 VDC (compatible TTL)		PT00. -40°C

Order your reference
Step file 3D
info@encoderhohner.com
 service available in 24 h

(*) Anti-rotation system type 1 (Flexible flange 90.1037), 2 (Anti-rotation pin 93.0108205), 3 (Flexible flange 90.1111) and 4 (Anti-rotation pin 93.0108208) supplied assembled.

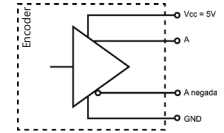
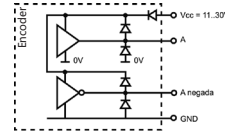
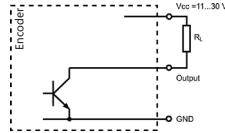
MECHANICAL SPECIFICATIONS

Materials	Cover: Aluminium Housing: Aluminium Shaft: Brass
Bearings	Ballraces
Bearings lifetime	1x10 ¹⁰ rev.
Housing fixing	Anti-rotation pin or flexible flange (included)
Permitted misalignment	±0.3 mm axial, ±0.1 mm radial (93.0108205, 93.0108208) ±0.3 mm axial, ±0.2 mm radial (90.1037) ±0.2 mm axial, ±0.1 mm radial (90.1111)
Shaft fixing	Setscrew
Hollow shaft diameter	6 or 8 mm
Maximum number of revolutions permitted mechanically	6000 rpm
Protection against dust and splashes according to DIN EN 60529	IP50
Rotor inertia moment	12 gcm ²
Starting torque at 20°C (68°F)	≤ 0.01 Nm
Maximum load permitted on axial shaft	20 N
Maximum load permitted on radial shaft	40 N
Weight aprox.	0.1 Kg
Operating temperature range	-20°C to +80°C - Standard -40°C to +80°C - Special Customer PT00
Vibration according to DIN EN 60068-2-6	100 m/s ² (10Hz...2000Hz)
Shock according to DIN EN 60068-2-27	1000 m/s ² (6ms)
Maximum pulses per turn	10000
Radial connection	2 meters cable or industrial connector M12 (other cable lengths available on order) Female connector not included

SERIE 22H

MINIATURE HOLLOW SHAFT INCREMENTAL ENCODER FOR INDUSTRIAL APPLICATIONS

OUTPUT SIGNALS



OUTPUT CIRCUIT	NPN Open Collector	Push-Pull Differential	RS422 (TTL compatible)
Reference code	0	1	2
Power supply	11...30 VDC	11...30 VDC	5 VDC ±5%
Output voltage	11...30 VDC	11...30 VDC	5 VDC
Consumption	40 mA	Typical: 45 mA Max: 150 mA	Typical: 70 mA Max: 150 mA
Max. load capability / channel	40 mA	±30 mA	±20 mA
Length of cable allowed	50 m (24 VDC)	100 m	1200 m
“Low” signal level	VOL < 0.4 VDC (24 VDC)	VOL < 2.5 VDC	VOL < 0.5 VDC
“High” signal level	VOH > 2.2 VDC (24 VDC)	VOH > VCC – 3 VDC	VOH > 2.5 VDC
Frequency	100 kHz	200 kHz	300 kHz
Short circuit protection	Not permanent	Yes	Yes
Protection polarity inversion	Yes	Yes	No

Channel A leads (90° electric) channel B, view from the shaft, shaft rotating clockwise.

CONNECTION



	Cable 5x0.14 95.0008051 (*)	Cable 8x0.14 95.0008052 (*)	Connector M12 8p CCW
GND	White (WH)	White (WH)	1
+UB	Brown (BN)	Brown (BN)	2
A	Green (GN)	Green (GN)	3
B	Yellow (YE)	Grey (GY)	4
\bar{A}	-	Yellow (YE)	5
\bar{B}	-	Pink (PK)	6
Z	Grey (GY)	Blue (BU)	7
\bar{Z}	Grey (GY)	Red (RD)	8
Case	Shield	Shield	Case

(*) For lengths over 2 meters standard cable, we recommend the use of twisted pair cable 2x2x0.14+1x0.14 (95.0008002) or 3x2x0.14+2x0.34 (95.0008003). Request the final cable length required to avoid junctions.

SERIE 22H

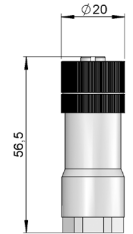
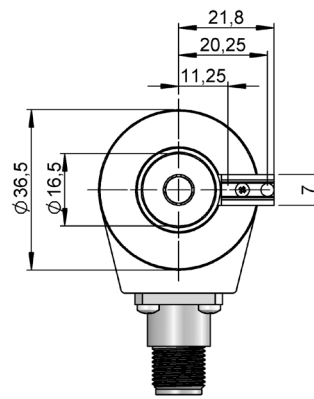
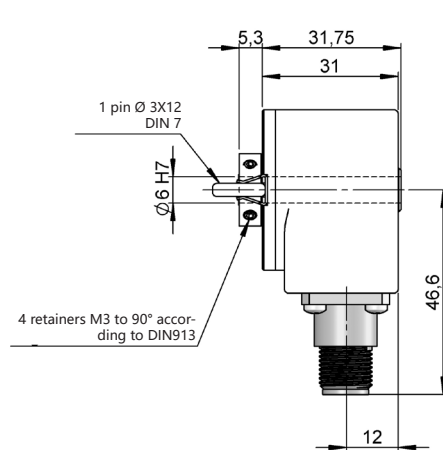
MINIATURE HOLLOW SHAFT INCREMENTAL ENCODER FOR INDUSTRIAL APPLICATIONS

CONNECTION DIMENSIONS

Female connector not included

Connection 3

Radial
M12 8p
male panel
counter clockwise



Female connector
95.0007152

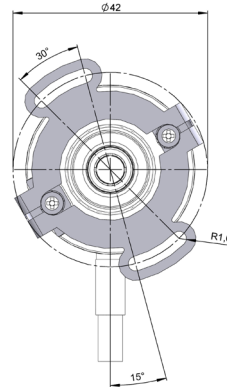
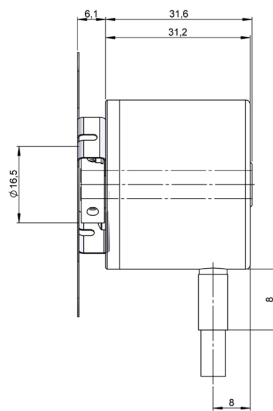


Pre-assembled cable

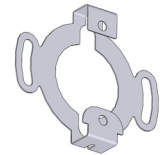
Without inverted signals: 89.003.01.000.XX
With inverted signals: 89.003.02.000.XX
Length in meters

ANTI-ROTATION SYSTEMS DIMENSIONS

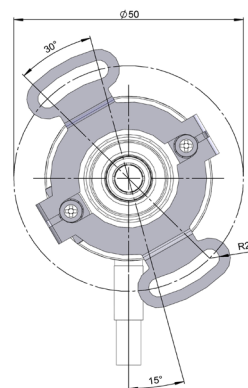
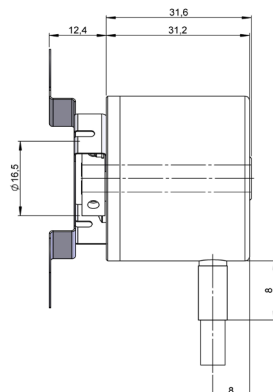
Flexible flange
90.1036



90.1036



Flexible flange
90.1083



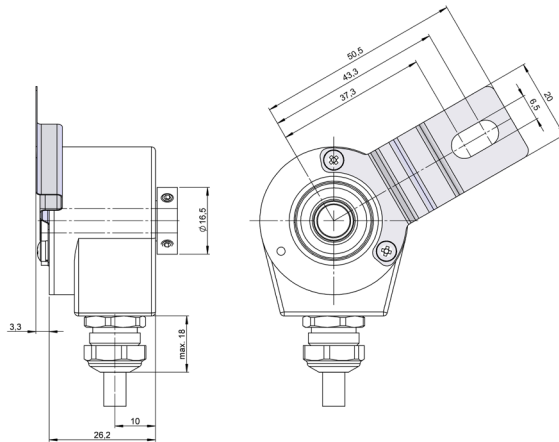
90.1083



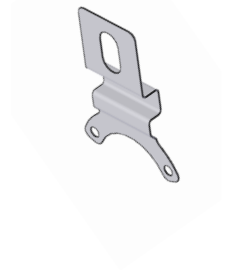
SERIE 22H

MINIATURE HOLLOW SHAFT INCREMENTAL ENCODER FOR INDUSTRIAL APPLICATIONS

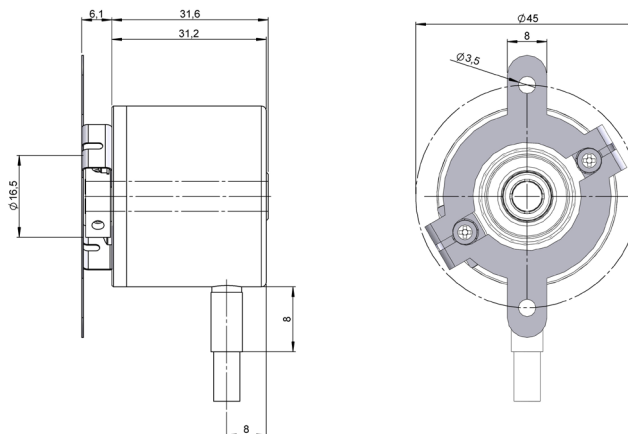
Flexible flange
93.0102085



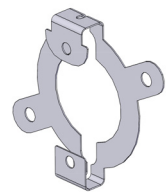
93.0102085



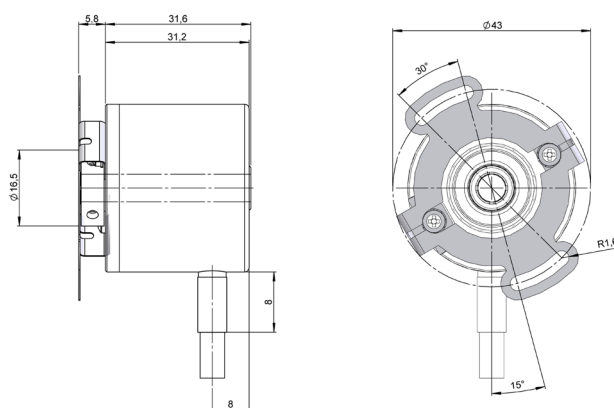
Flexible flange
93.0102087



93.0102087



Flexible flange
93.0102145



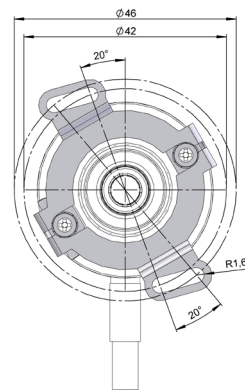
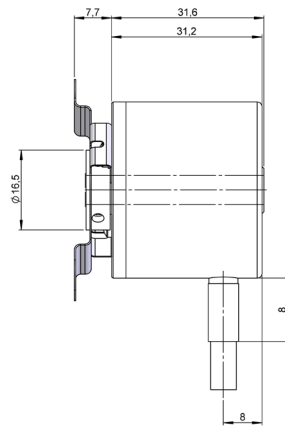
93.0102145



SERIE 22H

MINIATURE HOLLOW SHAFT INCREMENTAL ENCODER FOR INDUSTRIAL APPLICATIONS

Flexible flange
93.0102150



93.0102150

