



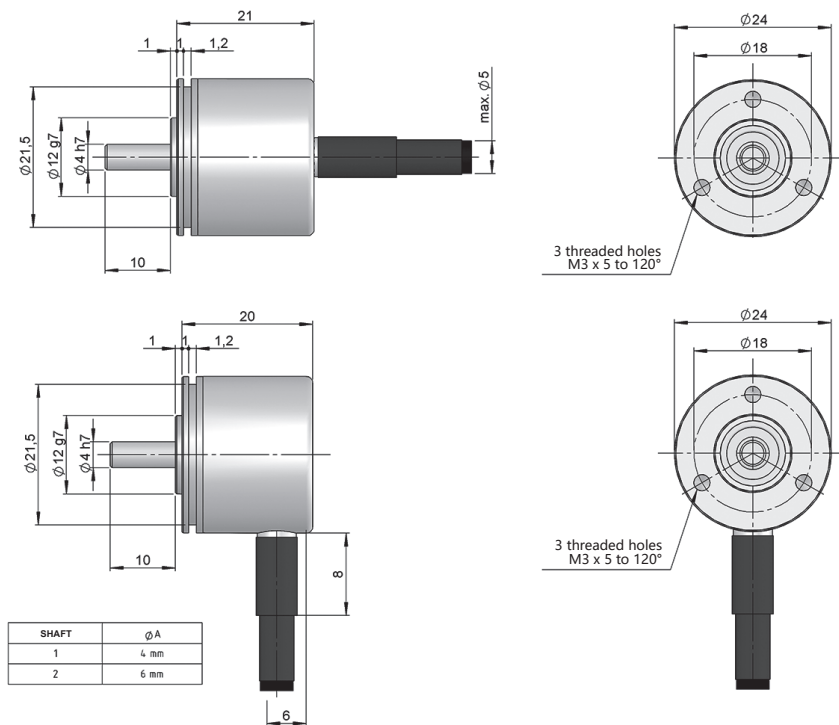
SERIE 26

MINIATURE SOLID SHAFT INCREMENTAL ENCODER FOR INDUSTRIAL APPLICATIONS

- Resolution up to 4096 pulses per turn
- External diameter 24 mm
- Shaft \varnothing 4 or 6 mm
- Protection class IP64 according to DIN EN 60529
- Connection by cable (other cable length available)



Optical Encoder	Incremental Encoder	Miniature Encoder	Vibration and shock resistant	IP64	Temperature range -40°C	Express Delivery



Drawing shaft type 1, connection type 1/2

REFERENCE

Reference example: 26-1721-500

Serie	Solid shaft	Output signals	Connection	Power Supply / Electronic output	Pulses number	Special customer
26 -	<input type="checkbox"/>	<input type="checkbox"/>	<input type="checkbox"/>	<input type="checkbox"/> -	<input type="checkbox"/> <input type="checkbox"/> <input type="checkbox"/> <input type="checkbox"/>	<input type="checkbox"/> <input type="checkbox"/> <input type="checkbox"/> <input type="checkbox"/>
	1. \varnothing 4 mm 2. \varnothing 6 mm	2. AB 3. ABZ 7. ABZ, \overline{ABZ} 8. AB, \overline{AB}	1. Axial cable 2. Radial cable	0. 11...30 VDC / NPN Open collector 11...30 VDC 1. 11...30 VDC / Line driver differential Push-Pull 11...30 VDC 2. 5 VDC / RS422 5 VDC (compatible TTL)		ZT00. -40°C

Order your reference Step file 3D

info@encoderhohner.com

service available in 24 h



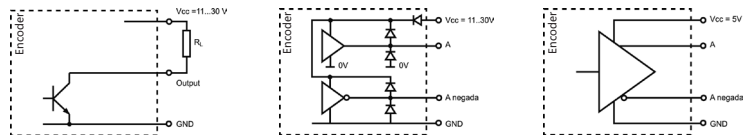
SERIE 26

MINIATURE SOLID SHAFT INCREMENTAL ENCODER FOR INDUSTRIAL APPLICATIONS

MECHANICAL SPECIFICATIONS

Materials	Cover: Aluminium Housing: Aluminium Shaft: Stainless Steel
Bearings	Ballraces
Bearings lifetime	1x10 ¹⁰ rev.
Maximum number of revolutions permitted mechanically	6000 rpm
Protection against dust and splashes according to DIN EN 60529	IP64
Rotor inertia moment	2 gcm ²
Starting torque at 20°C (68°F)	≤ 0.01 Nm
Maximum load permitted on axial shaft	20 N
Maximum load permitted on radial shaft	10 N
Weight aprox.	0.06 Kg
Operating temperature range	-20°C to +80°C - Standard -40°C to +80°C - Special Customer ZT00
Vibration according to DIN EN 60068-2-6	100 m/s ² (10Hz...2000Hz)
Shock according to DIN EN 60068-2-27	1000 m/s ² (6ms)
Maximum pulses per turn	4096
Axial or radial connection	2 meters cable (other cable lengths available or connector mounted at the end of the cable, upon request)

OUTPUT SIGNALS



OUTPUT CIRCUIT	NPN Open Collector	Push-Pull Differential	RS422 (TTL compatible)
Reference code	0	1	2
Power supply	11...30 VDC	11...30 VDC	5 VDC ±5%
Output voltage	11...30 VDC	11...30 VDC	5 VDC
Consumption	40 mA	Typical: 45 mA Max: 150 mA	Typical: 70 mA Max: 150 mA
Max. load capability / channel	40 mA	±30 mA	±20 mA
Length of cable allowed	50 m (24 VDC)	100 m	1200 m
“Low” signal level	VOL < 0.4 VDC (24 VDC)	VOL < 2.5 VDC	VOL < 0.5 VDC
“High” signal level	VOH > 2.2 VDC (24 VDC)	VOH > VCC – 3 VDC	VOH > 2.5 VDC
Frequency	100 kHz	200 kHz	300 kHz
Short circuit protection	Not permanent	Yes	Yes
Protection polarity inversion	Yes	Yes	No

Channel A leads (90° electric) channel B, view from the shaft, shaft rotating clockwise

SERIE 26

MINIATURE SOLID SHAFT INCREMENTAL ENCODER FOR INDUSTRIAL APPLICATIONS

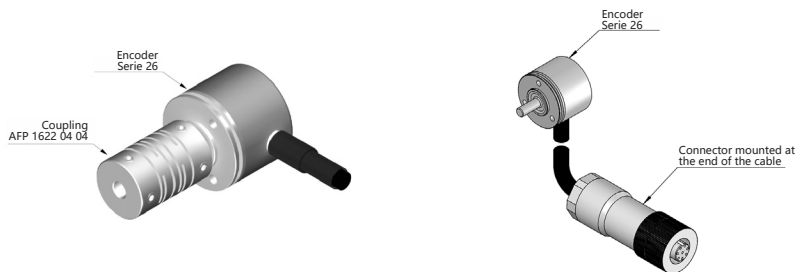
CONNECTION



	Cable 5x0.14 95.0008051 (*)	Cable 8x0.14 95.0008052 (*)
GND	White (WH)	White (WH)
+UB	Brown (BN)	Brown (BN)
A	Green (GN)	Green (GN)
B	Yellow (YE)	Grey (GY)
\bar{A}	-	Yellow (YE)
\bar{B}	-	Pink (PK)
Z	Grey (GY)	Blue (BU)
\bar{Z}	Grey (GY)	Red (RD)
Case	Shield	Shield

(*) For lengths over 2 meters standard cable, we recommend the use of twisted pair cable 2x2x0.14+1x0.14 (95.0008002) or 3x2x0.14+2x0.34 (95.0008003). Request the final cable length required to avoid junctions.

ACCESSORIES EXAMPLES



All the accessories available in the section "MOUNTING ACCESSORIES".