

Image with flexible flange 90.1124



SERIE 67

INCREMENTAL ENCODER FOR INDUSTRIAL APPLICATIONS

Equivalent for SEW ES7C / ES7R / EK8C

- Resolution up to 1.024 pulses per turn
- External diameter 58 mm
- Solid shaft \varnothing 10 expandable / Conic shaft 1:10
- Protection class IP66 according to DIN EN 60529
- Anti-rotation system through flexible flange
- Connection by cable (other cable length available)



Optical Encoder



Incremental Encoder



High shaft load capacity



Vibration and shock resistant



IP 66

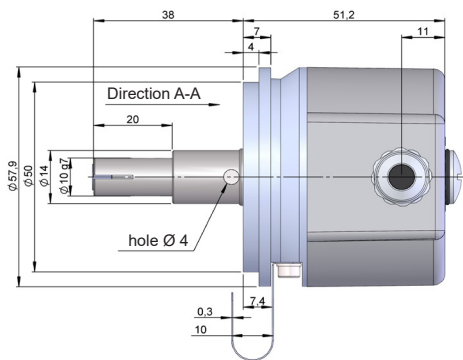


Temperature range
-40°C

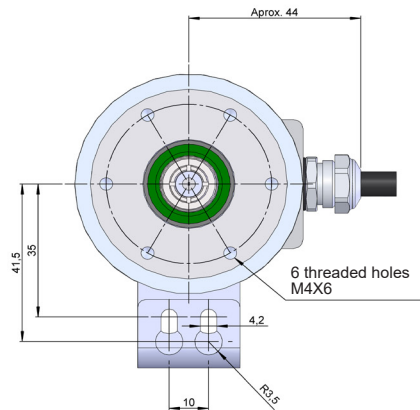


Express Delivery

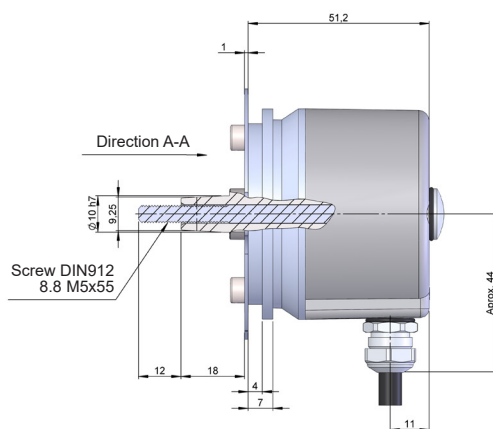
Flexible flange 90.1129



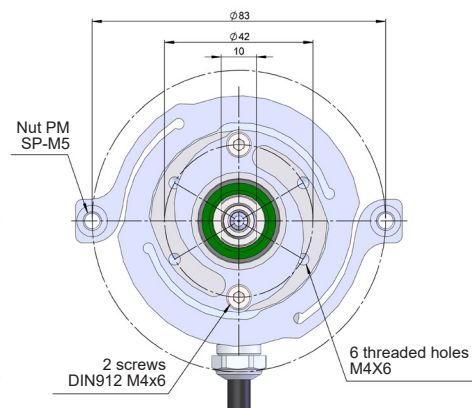
Drawing shaft type 1, anti-rotation system type 1



Flexible flange 90.1124



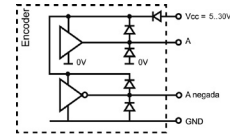
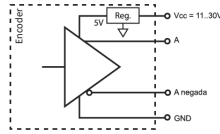
Drawing shaft type 2, anti-rotation system type 2



SERIE 67

INCREMENTAL ENCODER FOR INDUSTRIAL APPLICATIONS

OUTPUT SIGNALS



OUTPUT CIRCUIT	RS422 (TTL compatible)	Push-Pull Differential
Reference code	6	7
Power supply	11...30 VDC	5...30 VDC
Output voltage	5 VDC	5...30 VDC
Consumption	Typical: 80 mA Max: 160 mA	Typical: 70 mA Max: 150 mA
Max. load capability / channel	±20 mA	±30 mA
Length of cable allowed	1200 m	100 m
"Low" signal level	VOL < 0.5 VDC	VOL < 2.5 VDC
"High" signal level	VOH > 2.5 VDC	VOH > VCC – 3 VDC
Frequency	300 kHz	300 kHz
Short circuit protection	Yes	Yes
Protection polarity inversion	Yes	Yes

Channel B leads (90° electric) channel A, view from the shaft, shaft rotating clockwise

CONNECTION



	Cable 3x2x0,14+2x0,34 95.0008003
GND	Black (BK)
VCC	Red (RD)
A+	Yellow (YE)
A-	Brown (BN)
B+	Green (GN)
B-	Blue (BU)
Z+	Grey (GY)
Z-	Orange (OG)
Case (Case)	Shield (Shield)