



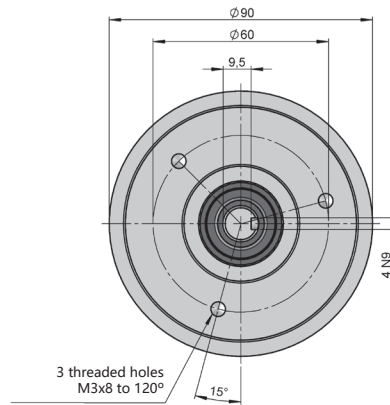
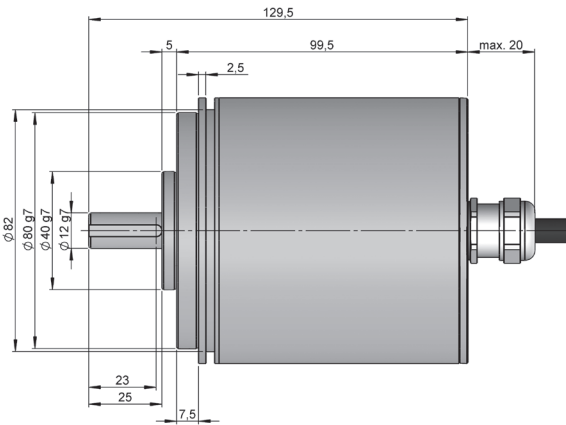
SERIE CS30 IP67

ABSOLUT ENCODER FOR SEVERE AND HEAVY DUTY INDUSTRIAL APPLICATIONS **PARALLEL**

- Parallel
- Singleturn resolution up to 13 bits
- External diameter 90 mm
- Shaft Ø 12 mm
- Protection class IP67 according to DIN EN 60529
- Connection by cable (other cable length available)



Optical Encoder	Absolute Encoder	High shaft load capacity	Vibration and shock resistant	IP 67	Temperature range -10°C	Express Delivery



Drawing shaft type 2, connection type 11, without flange

REFERENCE Reference example: CS30-21110123S-1024

Serie	Solid shaft	Flange	Connection	Interface	Code	IP	Power Supply / Electronic output	Parameters config.	Singleturn resolution	Special customer
CS30 -	<input type="checkbox"/>	<input type="checkbox"/>	<input type="checkbox"/>	<input type="checkbox"/>	<input type="checkbox"/>	<input type="checkbox"/>	<input type="checkbox"/>	<input type="checkbox"/>	<input type="checkbox"/>	<input type="checkbox"/>
	2. Ø 12x25 mm	1. None 3. 90.1008	11. Axial cable	0. Parallel	1. Binary CW 2. Binary CCW 3. Gray CW 4. Gray CCW 5. Gray excess CW 6. Gray excess CCW 7. BDC CW 8. BDC CCW	2. Stainless steel IP67 3. IP67	2. 10...30 VDC / NPN 3. 10...30 VDC / Push-Pull 4. 10...30 VDC / NPN OC	Blank. None S. Direction		

Order your reference Step file 3D

info@encoderhohner.com
service available in 24 h



SERIE CS30 IP67

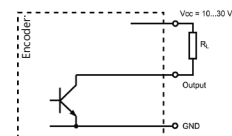
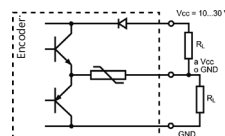
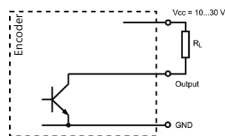
ABSOLUT ENCODER FOR SEVERE AND HEAVY DUTY INDUSTRIAL APPLICATIONS

PARALLEL

MECHANICAL SPECIFICATIONS

Materials	Cover: Aluminium (IP type 3) / Stainless steel (IP type 2) Housing: Aluminium Shaft: Stainless Steel
Bearings	Ballraces
Bearings lifetime	1x10 ¹⁰ rev.
Shaft diameter	12 mm
Maximum number of revolutions permitted mechanically	6000 rpm
Protection according to DIN EN 60529	IP67
Rotor inertia moment	270 gcm ²
Starting torque at 20°C (68°F)	≤ 0.05 Nm
Maximum load permitted on axial shaft	80 N
Maximum load permitted on radial shaft	100 N
Weight approx.	1.2 kg
Operating temperature range	-10°C to +70°C
Vibration	100 m/s ² (10Hz...2000Hz)
Shock	1000 m/s ² (6ms)
Axial connection	2 meters cable (other cable lengths available on order)

OUTPUT SIGNALS



OUTPUT CIRCUIT	NPN	Push-Pull	NPN Open Collector
Reference code	2	3	4
Power supply	10...30 VDC	10...30 VDC	10...30 VDC
Consumption max.	100 mA	100 mA	100 mA
Max. load capability / channel	40 mA	±30 mA	40 mA
“Low” signal level	VOL < 2.5 VDC	VOL < 2.5 VDC	VOL < 2.5 VDC
“High” signal level	VOH > VCC - 3V	VOH > VCC - 3V	VOH > VCC - 3V
Frequency	200 kHz	200 kHz	200 kHz

ELECTRICAL SPECIFICATIONS

Interface	Parallel
Inputs	Opto-coupled
Code	Binary Gray BCD
Singleturn resolution	up to 8192 points per turn (13 bits)
Linearity	±1/2 LSB
Parameters config.	Direction

SERIE CS30 IP67

ABSOLUT ENCODER FOR SEVERE AND HEAVY DUTY INDUSTRIAL APPLICATIONS

PARALLEL

CONNECTION



	Cable 15 x 0.14 mm ² 95.0008031	Cable 25 x 0.14 mm ² 95.0008030
GND	Black (BK)	Black (BK)
+UB	Red (RD)	Red (RD)
Bit 0	Brown (BN)	Brown (BN)
Bit 1	White (WH)	White (WH)
Bit 2	Yellow (YE)	Yellow (YE)
Bit 3	Green (GN)	Green (GN)
Bit 4	Orange (OG)	Pink (PK)
Bit 5	Violet (VT)	Orange (OG)
Bit 6	Grey (GY)	Grey (GY)
Bit 7	Blue (BU)	Blue (BU)
Bit 8	White (WH) - Black (BK)	Yellow (YE) - Black (BK)
Bit 9	White (WH) - Red (RD)	Yellow (YE) - Red (RD)
Bit 10	White (WH) - Brown (BN)	Yellow (YE) - Brown (BN)
Bit 11	White (WH) - Yellow (YE)	Yellow (YE) - Green (GN)
Bit 12	White (WH) - Blue (BU)	Yellow (YE) - Grey (GY)
Bit 13	-	Yellow (YE) - Blue (BU)
Bit 14	-	White (WH) - Black (BK)
Bit 15	-	White (WH) - Red (RD)
DIR (*)	White (WH) - Yellow (YE)	Yellow (YE) - Pink (PK)

(*) To invert the code sense connect permanently the pin DIR to GND (ground).

FLANGE DIMENSIONS

Flange 3
90.1008

